

## Case Report

### Corresponding author

Hitoshi Hanamoto, MD, PhD

Department of Hematology

Nara Hospital

Kindai University Faculty of Medicine

1248-1 Otoda-chou

Ikoma City, Nara 630-0293, Japan

Tel. +81-743-77-0880

Fax: +81-743-77-0890

E-mail: [hanamoto@nara.med.kindai.ac.jp](mailto:hanamoto@nara.med.kindai.ac.jp)

Volume 1 : Issue 1

Article Ref. #: 1001MOJ1104

### Article History

Received: December 27<sup>th</sup>, 2016

Accepted: January 5<sup>th</sup>, 2017

Published: January 5<sup>th</sup>, 2017

### Citation

Sano K, Fujii A, Fujiwara R, et al. Successful third hematopoietic stem cell transplantation for blast crisis of chronic myeloid leukemia after two times of graft failure. *Intern Med Open J.* 2017; 1(1): 13-19. doi: [10.17140/IMOJ-1-104](https://doi.org/10.17140/IMOJ-1-104)

### Copyright

©2017 Hanamoto H. This is an open access article distributed under the Creative Commons Attribution 4.0 International License (CC BY 4.0), which permits unrestricted use, distribution, and reproduction in any medium, provided the original work is properly cited.

# Successful Third Hematopoietic Stem Cell Transplantation for Blast Crisis of Chronic Myeloid Leukemia After Two Times of Graft Failure

Keigo Sano, MD; Aki Fujii, MD; Ryosuke Fujiwara, MD; Mariko Fujita, MD; Shuji Minamoto, MD; Keiko Yamazaki, MD; Hideo Yagi, MD, PhD; Kazuo Tsubaki, MD, PhD; Hitoshi Hanamoto, MD, PhD

Department of Hematology, Nara Hospital, Kindai University Faculty of Medicine, 1248-1 Otoda-chou, Ikoma City, Nara 630-0293, Japan

### ABSTRACT

**Background:** Chronic Myeloid Leukemia (CML) is largely treated with BCR-ABL protein targeted drugs called tyrosine kinase inhibitors (TKIs), imatinib, which have led to dramatical improvement in 2001. Nilotinib and dasatinib were approved as the second new TK inhibitor in 2010, and Radotinib in 2012. However, the only curative treatment for CML is a bone marrow transplant or an allogeneic stem cell transplant.

**Case:** A 42-year-old man was diagnosed CML in June 2011. He had achieved complete cytogenetic response in 5 months later by nilotinib treatment. It did not lead to major molecular response in the 18<sup>th</sup> month, and blastic phase of acute promyelocytic leukemia (M3) occurred in the 19<sup>th</sup> months. Leukemia cells had both promyelocytic leukemia gene/retinoic acid receptor alpha (PML/RAR $\alpha$ ) and BCR/ABL translocations. A retinoic acid was administered for M3. The dasatinib was administered for the blast crisis, and remission was obtained.

**Transplantation:** Hematopoietic stem cell transplantation (HSCT) from umbilical cord blood was performed at remission, but it was rejected twice. The third HSCT was succeeded from a sister who had hyperthyroidism.

**Conclusion:** After 2 times of graft failures, HSCT was succeeded. Long plan of treatment is necessary for middle aged CML patients.

**KEYWORDS:** Third stem cell transplantation; Graft failure; Chronic myelogenous leukemia; Acute promyelocytic leukemia.

**ABBREVIATION:** CML: Chronic Myelogenous Leukemia; BCR: Breakpoint cluster region protein; ABL1: Ablason murine leukemia viral oncogene homolog 1; TKI: Tyrosine Kinase Inhibitor; PML: Promyelocytic Leukemia Gene; RAR $\alpha$ : Etinoic Acid Receptor  $\alpha$ ; HSCT: Hematopoietic Stem Cell Transplantation; CD: Cluster of Differentiation; HLA-DR: Human Leukocyte Antigen-Antigen D related; qRT-PCR: quantitative Reverse Transcription Polymerase Chain Reaction; RT-PCR: Reverse Transcription Polymerase Chain Reaction; G-banding: Giemsa banding; SKY FISH: Spectral Karyotyping Fluorescence *in situ* Hybridization; ATRA: All-trans Retinoic Acid; CCyR: Complete Cytogenetic Response; MMR: Major Molecular Response.

### INTRODUCTION

Chronic Myelogenous Leukemia (CML) is a myeloproliferative disorder characterized by the existence of Philadelphia chromosome. BCR-ABL protein targeted drugs called tyrosine kinase inhibitors (TKIs) dramatically improved patients' survival in 2010s. These drugs are imatinib, Nilotinib, Dasatinib and Radotinib.

As a result, hematopoietic stem cell transplantation (HSCT) with allo-HSCT is decreasing.<sup>1</sup> A graft failure is one of the crucial complications in allo-HSCT. If it occurs, the most of the patients run their fatal course. In the present case, promyelocytic blast crisis occurred in the second chronic phase CML and we performed allo-HSCT for three times for graft failures.

### CASE REPORT

A 42 year-old male was diagnosed with CML in June 2011 and started the administration of nilotinib of 600 mg/day on June 12, 2011. He was treated by TKI, and a month later, therapeutic effect reached complete hematologic response. Then, 5 months later, it reached complete cytogenetic response although it had never reached major molecular response ever.

We considered changing nilotinib to dasatinib at the 19<sup>th</sup> month since it did not reach major molecular response at the 18<sup>th</sup> month.<sup>2</sup> On January 20, 2013, laboratory data showed pancytopenia; white blood cell count of  $1.76 \times 10^9$  /L, hemoglobin count of 14.6 g/dL and platelet count of  $122.0 \times 10^9$  /L. Biochemical testing showed aspartate transaminase (AST) at 33 U/L, alanine aminotransferase (ALT) at 218 U/L, lactate dehydrogenase (LDH) at 148 U/L, total bilirubin (T-Bil) at 2.3 mg/dL and C-Reactive Protein (CRP) at 0.05 mg/dL. Coagulation test showed prothrombin time (PT)-INR at 0.96, activated partial thromboplastin time (APTT) at 27.4 sec, fibrinogen (Fib) at 212 mg/dL, fibrin/fibrinogen degradation product (FDP) 1.6 µg/mL. A smear of bone marrow aspiration showed promyelocytic blastoid cells 31.4% with positive cluster of differentiation 16 (CD16), CD33 and human leukocyte antigen-antigen D related (HLA-DR) staining (Figure 1A and B). RT-PCR showed promyelocytic leukemia gene/retinoic acid receptor alpha (PML/RAR $\alpha$ ) 47000

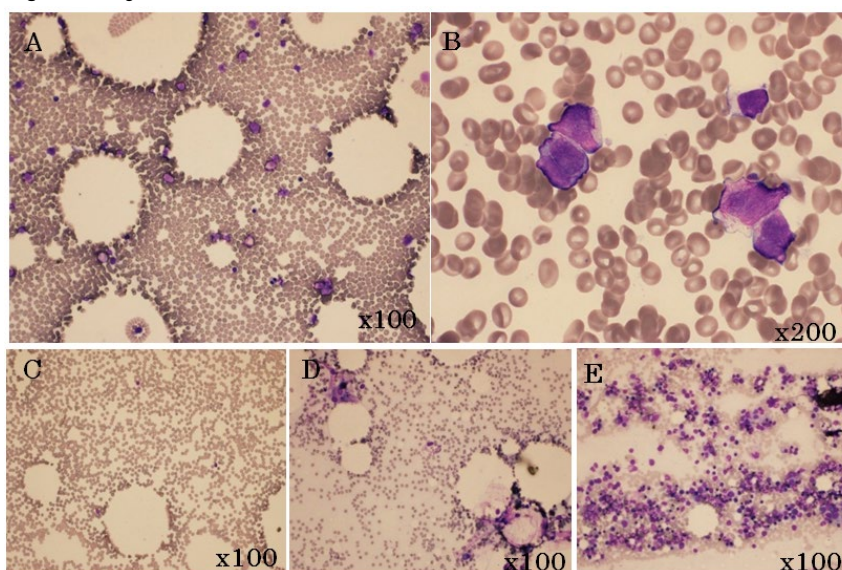
copy/ $\mu$ RNA on admission (Table 1). Thus, promyelocytic (M3) blast crisis of CML was diagnosed. Moreover, BCR/ABL was 625 copy/0.5  $\mu$ RNA and there was no gene mutation of BCR/ABL. Karyotype revealed 46, XY, t(9;22)(q34;q11.2), t(15;17)(q22;q21)9/20 by Giemsa band (G-band) staining and Spectral karyotyping-Fluorescence *in situ* hybridization (SKY-FISH) (Figure 2).

It was positive of BCR/ABL and PML/RAR $\alpha$ ; therefore, the administration was changed from nilotinib to dasatinib in addition to administer ATRA on January 25, 2013. On March 19, 2013, bone marrow examination revealed to reach complete hematologic remission with negative of BCR/ABL and PML/RAR $\alpha$  by fluorescence *in situ* hybridization, but they were positive by the reverse transcription-polymerase chain reaction (RT-PCR).

Hence, this therapeutic effect reached complete cytogenetic response (CCyR) but did not reach major molecular response (MMR). Thus, we diagnosed that his state could achieve second chronic phase. According to the course of treatment until then, we had been considering that it was necessary for him to be performed allogenic hematopoietic stem cell transplantation. Therefore, we began to search for donors immediately.

He had a human leukocyte antigen (HLA) well matched related donor, a sister; however, she had past medical history of hepatitis C and had undergone medical treatment for Graves' disease by methimazole prior to the eligibility test. Based on these factors, we decided she did not suit as his donor, so that we started searching for an unrelated donor. Finally, we selected cord blood for his treatment since there was no well-matched unrelated bone marrow donor in Japan Marrow Donor Program.

Figure 1: Image of Bone Marrow Examination.

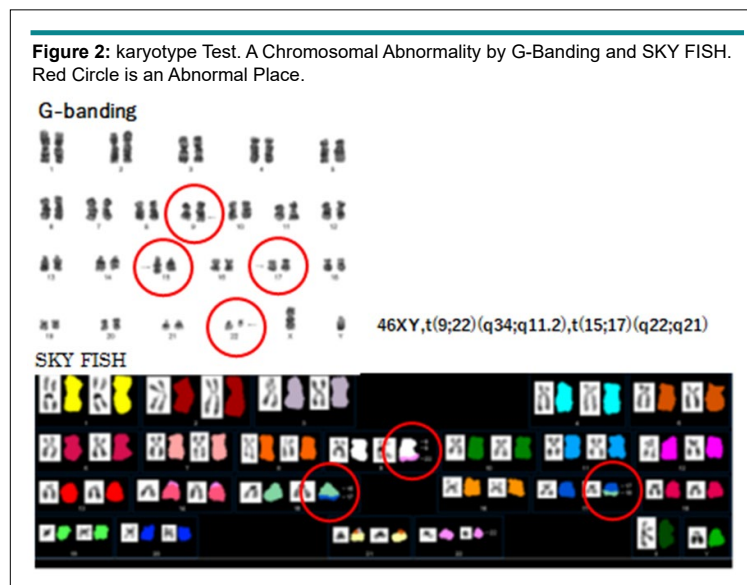


The Figure A,C,D and E is x200. The Figure B is x1000. The Figure of A and B Show Promyelocytic Blastoid. The Figure of C and D Show Hypocellular Bone Marrow as Graft Failure. The Figure of E Show the Engraftment.

**Table 1:** Hematological Data at the First Admission, Blastic Crisis and Discharge.

	At first	At blast crisis	At discharge
<b>WBC (4000-8000) /<math>\mu</math>L</b>	<b>25300</b>	<b>1510</b>	<b>2480</b>
<b>stab %</b>	<b>2.5</b>	<b>1</b>	<b>1</b>
<b>seg %</b>	<b>59.5</b>	41	40
<b>lymp %</b>	<b>17.5</b>	<b>55</b>	41
<b>Mono %</b>	6.5	2	<b>13</b>
<b>Eosino %</b>	1.5	0	4
<b>Baso %</b>	<b>3.5</b>	1	1
<b>Myelo %</b>	<b>7.5</b>		
<b>Metamy %</b>	<b>1.5</b>		
<b>RBC (420-540) m/mm<sup>2</sup></b>	543	416	<b>277</b>
<b>Hb (12.5-17.5) g/dL</b>	16.6	13.6	<b>9.9</b>
<b>Ht (39-51) %</b>	50.3	40.1	<b>29.5</b>
<b>Plt (130000-330000) /<math>\mu</math>L</b>	284000	136000	147000
<b>Ret (7-23)</b>	22.4	13.6	<b>35.6</b>
<b>BM</b>			
<b>NCC /<math>\mu</math>L</b>	1117000	84000	*105000
<b>MgK /<math>\mu</math>L</b>	343	12	*50
<b>Promyelocyto(Blastiod) %</b>		<b>31</b>	* <b>0.6</b>
<b>M-bcr/abl mRNA copies/ <math>\mu</math>gRNA</b>	<b>27000</b>	<b>180000</b>	*<50
<b>PML/RAR<math>\alpha</math> mRNA copies/ <math>\mu</math>gRNA</b>		<b>47000</b>	*<50

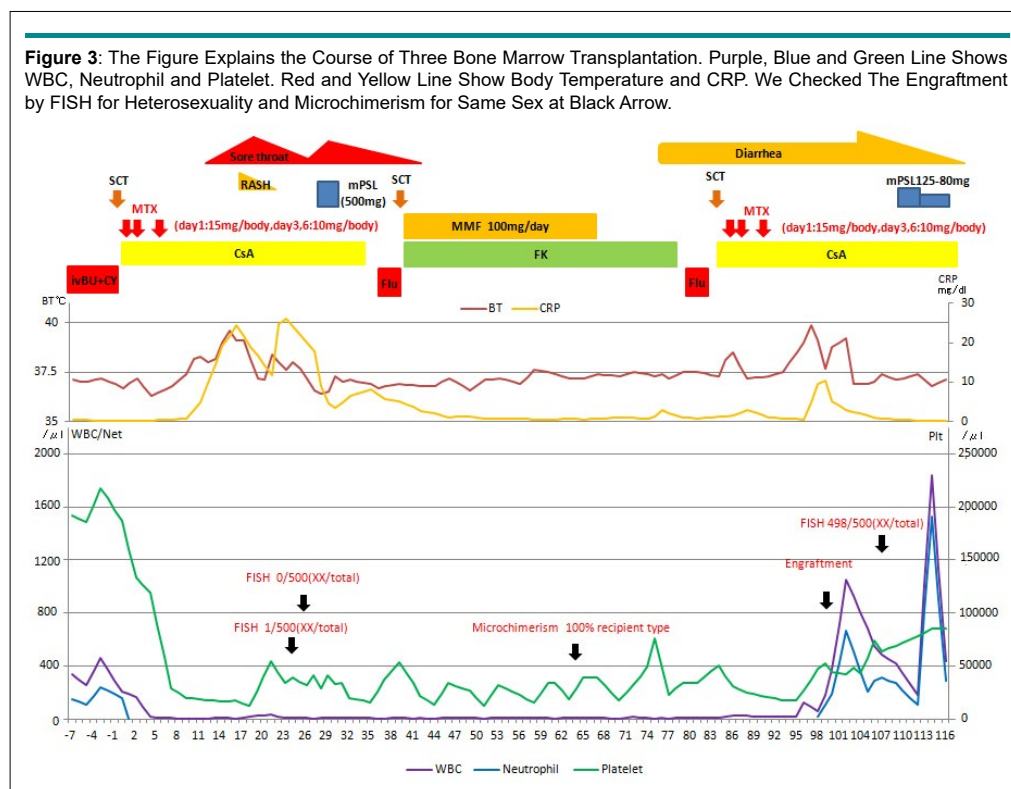
In parentheses indicates the normal value.  
\*is the data of two months before discharge.



Selected cord blood was from a female, its donor-recipient HLA-allele match was 5/8, nuclear cell count was  $3.71 \times 10^6/\text{kg}$ , CD34 positive cell count was  $0.756 \times 10^5/\text{kg}$  and blood type was A+ (recipient blood type was B+). HLA antibody was positive yet donor allele type's antibody did not exist. On May 9, 2013, he was hospitalized for allogenic hematopoietic stem cell transplantation.

**Stem Cell Transplantation**

The conditioning regimen was selected as myeloablative regimen, intravenous busulfan and cyclophosphamide (IV BU/CY) and prevention of graft vs. host disease, was used for cyclosporine and short-term methotrexate. Transplantation conditioning was started from 7 day and cord blood (CB) infusion was



performed on 0 day (Figure 3). It caused myelosuppression and caused a grade 2 fever and a grade 3 sore throat. Rash appeared on the 20% of body surface area mainly on the trunk from day 15 and his white blood cell (WBC) count decreased to  $0.18 \times 10^9/L$  on 18<sup>th</sup> day. Therefore, we diagnosed that it was an engraftment syndrome by a febrile neutropenia.

According to his good physical status and no abnormal vital sign, observation on the engraftment syndrome was continued by administration of antimicrobial drug for febrile neutropenia. On the day 21, his fever improved and white blood count became  $0.31 \times 10^9/L$  and the value of C-reactive protein-improved. However, fever and sore throat was getting worse and a severe neutropenia happened on the day 23 and 25 in which WBC count decreased to  $0.09 \times 10^9/L$ . A possibility of hemophagocytic syndrome (HPS) was suspected, and bone marrow examination revealed severe hypocellular bone marrow; nuclear cell count was  $3.0 \times 10^9/L$  without hemophagocytic macrophage (Figure 1C). Ferritin level on the day 25 and 28 were 1190.7 ng/mL and 974.2 ng/mL, respectively. AST, ALT and other hepatic enzymes were within normal levels and no splenomegaly was noticed. Thus, the hemophagocytic lymphohistiocytosis-2004 (HLH) trial criteria were not satisfied.

These conditions seemed to be the secondary graft failure by HPS, so 500 mg methylprednisolone was given for 3 days from the day 28. On the day 30 the severe hypo-cellular bone marrow showed chimaerism of complete recipient pattern.

He was diagnosed with secondary graft failure and the second HSCT was performed. We selected CB from male, and

blood type A+. Whose recipient-donor HLA allele match was at 4/8, nuclear cell count was  $2.13 \times 10^6/kg$ , and CD34 positive cell count was  $0.495 \times 10^5/kg$ . Donor allele type's HLA-antibody had not been revealed prior to the second HSCT. We selected non-myeloablative conditioning of fludarabine  $30 \text{ mg/m}^2$  for 3 days, because he had an infection as a complication of HSCT. Fujisawa kaihatsu/mycophenolate mofetil (FK/MMF) (MMF 1000 mg/day) was selected for prevention of graft versus host disease (GVHD) on the 40<sup>th</sup> day from the first HSC infusion.

After the second HSCT, his fever and sore throat improved but white blood cell count remained low. Bone marrow examination performed on the day 65 after the second SCT showed a severe hypo-cellular bone marrow in which nuclear cell count was  $5000/\mu\text{L}$  (Figure 1D) and chimaerism was exactly the same as the pattern of the recipient before.

Therefore, we decided that the second HSCT was failed.

On the third HSCT, there was no CB better than the second SCT. Thus, we extended the range of donors to cousins to consider a better possibility of haplo-identical hematopoietic stem cell transplantation. However, there were no haplo-identical donors. We thought there was no superior method to save him besides the transplantation from his sister mentioned earlier who was HLA well matched related donor. We had got sufficient informed consent from him, his family and donor candidate, and she agreed to be a donor.

Her aptitude for SCT was confirmed by hepatitis C vi-

rus (HCV) infection being below the sensitivity level by qRT-PCR, and the thyroid function was within the normal range. Third HSCT was decided to perform peripheral blood hematopoietic stem cell transplantation, because the recipient had been in continued long-term neutropenia. Conditioning regimen was the same as the second SCT, and prevention of GVHD were done by CyA/ short-term methotrexate (MTX) (day1:15 mg/body day 3 and 6:10 mg/body). Peripheral blood stem cell harvest was performed to use granulocyte-colony stimulating factor (G-CSF) 10 µg/kg/day. Collected nuclear cell counts (NCCs) was  $7.26 \times 10^8$ /kg and CD34<sup>+</sup> cells  $2.39 \times 10^6$ /kg. Stem cell transplantation (SCT) was performed on the day 84 and 85 after operating the 1<sup>st</sup> SCT. White blood cell count increased from the day 11 and became over 1000/ml on the day 99. He had been having a fever, decreasing percutaneous oxygen saturation and increasing body weight due to edema from the day 98. Those symptoms apparently started progressive from the day 102. Acute GVHD or engraftment syndrome was suspected and 125 mg methylprednisolone (mPSL) was administrated. Diarrhea, fever and respiratory distress were improved after administration of mPSL. Colonoscopy was performed for the diagnosis of GVHD, but no pathological finding of GVHD was found. We considered these symptoms were related to the graft failure. Therefore, we decided to decrease the mPSL administration. Bone marrow examination on the day 107 for confirming graft engraftment showed enough hematopoiesis (NCC: $73.1 \times 10^4$ /µL) (Figure 1E). The graft engraftment by *in situ* hybridization was donor type 498/500. Engraftment syndrome was improved so that administration of mPSL was discontinued and CyA was changed intravenous administration to per oral administration (PO) on the day 113. Stage acute GVHD appeared on the skin on the day 155; however, this symptom was successfully controlled by antihistamine and external preparation of steroid.

CyA induced renal dysfunction was improved by decreasing CyA and discontinued on the day 193. PSL 10 mg administration was started from the day 114 because a GVHD still remained. Twelve months later from the third SCT, CML condition retained MMR, HCV level kept below the sensitivity level, thyroid function was normal and thyroid stimulating hormone (TSH) receptor antigen was negative, and he could discharge from the hospital.

## DISCUSSION

Graft failure is one of the rare yet crucial complications of allo-SCT. Fatality rate is said to be 40-50% when it occurs. Basically, radical treatment of CML is the only allo-SCT except it caused HPS.<sup>3,12</sup> Therefore, second allo-SCT should be performed as soon as possible after the diagnosis of graft failure. So far, our searched on previous cases which had cured from two times graft failure, found no report of multiple SCT with successful result. Cell number of graft, basic disease, disease stage before SCT, degree of HLA matching, blood type mismatch, cord blood, existing of HLA antibody, prevention of GVHD and conditioning regimen were considered to be the cause of graft failure. Especially, cord blood was known to cause high rate of graft failure, it is recognized at approximately 20% of the cases. Cord blood, HLA antibody, blood type mismatch, conditioning regimen and degree of HLA matching corresponded to our case.

There was no large cohort study describing therapeutic value of cord blood SCT for CML. Currently, there is one retrospective report of 86 cases from Japan Cord Blood bank.<sup>5</sup> The report showed that 2 year predicting event-free-survival (EFS) was  $34 \pm 6\%$ , leukemia-free-survival (LFS) was  $38 \pm 6\%$  and overall-survival (OS) was  $53 \pm 6\%$  after cord blood stem cell transplantation for CML. In addition, with two-year EFS for patients in chronic phase (CP), accelerated phase (AP) and blastic crisis (BC) was 52% (95% CI, 56-90%), 38% (95% CI, 17-84%) and 22% (95% CI, 10-48%) and with two-year OS for patients in CP, AP and BC was 71% (95% CI, 48-100%), 59% (95% CI, 37-94%) and 32% (95% CI, 20-55%), respectively. Cord blood could be acceptable as alternative donor for CML patients who need allo-SCT when well-matched related or unrelated donor was present. Otherwise, this report said that EFS makes a significant difference in nuclear cell count (NCC) and the age of the recipient. Event-free survival (EFS) of the case of NCC above  $3.0 \times 10^7$ /kg was 68% (95% CI, 48-96%) and below it was 20% (95% CI, 12-35%). Its *p* value was at 0.0005. EFS significantly differed by age; under the age 15 was 74% (95% CI, 48-100%), between the age of 15 and 50 was 33% (95% CI, 22-49%) and over the age of 50 was 15% (95% CI, 3-72%).

There were 7 cases of graft failure in the report, but the

**Table 2:** Method of Stem Cell Transplantation of 3 Times.

	1 <sup>st</sup>	2 <sup>nd</sup>	3 <sup>rd</sup>
<b>Donor source</b>	Cord Blood	Cord Blood	Peripheral blood ( sibling)
<b>HLA match</b>	5/8	4/8	8/8
<b>Blood type</b>	Major minor mismatch	Match	Match
<b>NCC</b>	$3.71 \times 10^6$ /Kg	$2.13 \times 10^6$ /Kg	$7.26 \times 10^7$ /Kg
<b>CD34+ cell count</b>	$0.756 \times 10^6$ /Kg	$0.495 \times 10^6$ /Kg	$2.39 \times 10^6$ /Kg
<b>Conditioning regime</b>	ivBU(12.8 mg/kg)×4/ CY(120 /m <sup>2</sup> )×2	Flu( 30 mg/m <sup>2</sup> )×3	Flu( 30 mg/m <sup>2</sup> )×3
<b>GVHD prevention</b>	CsA+Short term MTX	Tac+ MMF	CsA+Short term MTX
<b>Result</b>	Graft failure	Graft Failure	Engraftment

relationship with NCC and age was not mentioned. In this case, age of our patient had a capability of a risk factor, although cord blood had enough NCC at the first SCT. Nowadays CD34<sup>+</sup> cell count showed a better relationship than NCC for graft engraftment. Takahashi et al reported that HLA antibody is related to WBC engraftment but the cases are not effected by that in case cord blood having  $0.85 \times 10^5/\text{kg}$  CD34<sup>+</sup> cells or more.<sup>1-4</sup> The first and the second SCT had  $0.445 \times 10^5/\text{kg}$  and  $0.5 \times 10^5/\text{kg}$  CD34<sup>+</sup> cells so CD34<sup>+</sup> cells count was suspected to be the reason of graft failure (Table 2). From the above factors, it is necessary for us to consider CD34<sup>+</sup> cells count in case recipient who has HLA antibody.

In recent years, cases of M3 type blast crisis of CML have been reported over 30 cases and 7 cases were treated by TKIs. Some cases showed the effect of chemotherapy, combine all-trans retinoic acid (ATRA) or arsenic trioxide. On the other hand, allo-SCT were performed in 3 cases and these cases showed therapeutic effect ranging from CCyR to MMR. Allo-SCT is considered to be an effective therapy for these cases.

In comparison of myeloablative conditioning regimen, formerly, busulfan and cyclophosphamide (BU-CY) had a weaker immune suppression than cyclophosphamide-total body irradiation (CY-TBI). Employment of BU-CY leads graft failure more frequently in both peroral BU-CY and CY-TBI to CML patients.<sup>6</sup> A retrospective cohort study showed intravenous BU-CY was superior to CY-TBI on OS of CML patients.<sup>7,8</sup> Based on these reports, conditioning regimen of first CBT was not suspected to be a factor of graft failure.<sup>1-3</sup> If the blood concentration of BU is below its effective concentration, frequency of graft failure would increase. Area under the blood concentration-time curve (AUC) of intravenous BU administration is more stable than preoral BU. Almost all cases fit in effective concentration 800-1500  $\mu\text{M}\cdot\text{min}$  though approximately 14% of the cases do not fit in.<sup>9,10</sup> There is a possibility that AUC is below the effective concentration because our case did not measure BU AUC.

We had no consensus on the conditioning regimen of re-transplantation for graft failure yet. There is a tendency that fludarabine based nonmyeloablative regimen is selected more. Our case was chosen 3 day fludarabine regimen. Recently, the one-day regimen which is combined fludarabine with alkylating agents, anti-human thymocyte immunoglobulin (ATG) or alemtuzumab has been reported and some cases could have been treated by this regimen.<sup>4,11</sup>

Second CBT was considered to have an extremely high risk for graft failure since it was cord blood for the second time and its cell count was below  $3.0 \times 10^7/\text{kg}$ . Therefore, we had to select a donor as soon as possible. The HLA well-matched relative donor had been infected of hepatitis C and on medication for Grave's disease prior to the transplant, so we had selected her as an urgent donor. As leukocytopenia and neutropenia had continued long term, the patient understood the necessity of the

third allo-SCT well. He was enthusiastic for infection prevention so that we could perform the third allo-SCT. Now, he is able to return to his occupation without any infection with hepatitis C. Moreover, his thyroid function is normal. It would be necessary for the patient to be carefully observed for further hepatitis and thyroid function.

#### ACKNOWLEDGMENT

We would like to thank Dr. Shaw Watanabe for good his constructive advice.

#### CONFLICTS OF INTEREST

The authors declare that they have no conflicts of interest.

#### REFERENCES

- Jabbour E, Kantarjian H. Chronic myeloid leukemia: 2014 update on diagnosis, monitoring, and management. *Am J Hematol*. 2014; 89(5): 547-556. doi: [10.1002/ajh.23691](https://doi.org/10.1002/ajh.23691)
- Baccarani M, Saglio G, Goldman J, et al. Evolving concepts in the management of chronic myeloid leukemia: Recommendations from an expert panel on behalf of the European LeukemiaNet. *Blood*. 2006; 108(6): 1809-1820. doi: [10.1182/blood-2006-02-005686](https://doi.org/10.1182/blood-2006-02-005686)
- Guardiola P, Kuentz M, Garban F, et al. Second early allogeneic stem cell transplantations for graft failure in acute leukaemia, chronic myeloid leukaemia and aplastic anaemia. French Society of Bone Marrow Transplantation. *Br J Haematol*. 2000; 111(1): 292-302. doi: [10.1111/j.1365-2141.2000.02306.x](https://doi.org/10.1111/j.1365-2141.2000.02306.x)
- Kanda J, Horwitz ME, Long GD, et al. Outcomes of a 1-day nonmyeloablative salvage regimen for patients with primary graft failure after allogeneic hematopoietic cell transplantation. *Bone marrow transplantation*. 2012; 47(5): 700-705. doi: [10.1038/bmt.2011.158](https://doi.org/10.1038/bmt.2011.158)
- Nagamura-Inoue T, Kai S, Azuma H, et al. Unrelated cord blood transplantation in CML: Japan Cord Blood Bank Network analysis. *Bone Marrow Transplantation*. 2008; 42(4): 241-251. doi: [10.1038/bmt.2008.164](https://doi.org/10.1038/bmt.2008.164)
- Kanda Y, Sakamaki H, Sao H, et al. Effect of conditioning regimen on the outcome of bone marrow transplantation from an unrelated donor. *Biol Blood Marrow Transplant*. 2005; 11(11): 881-889. doi: [10.1016/j.bbmt.2005.07.005](https://doi.org/10.1016/j.bbmt.2005.07.005)
- Socie G, Clift RA, Blaise D, et al. Busulfan plus cyclophosphamide compared with total-body irradiation plus cyclophosphamide before marrow transplantation for myeloid leukemia: Long-term follow-up of 4 randomized studies. *Blood*. 2001; 98(13): 3569-3574. doi: [10.1182/blood.V98.13.3569](https://doi.org/10.1182/blood.V98.13.3569)

8. Bredeson C, LeRademacher J, Kato K, et al. Prospective cohort study comparing intravenous busulfan to total body irradiation in hematopoietic cell transplantation. *Blood*. 2013; 122(24): 3871-3878. doi: [10.1182/blood-2013-08-519009](https://doi.org/10.1182/blood-2013-08-519009)
9. Andersson BS, Kashyap A, Gian V, et al. Conditioning therapy with intravenous busulfan and cyclophosphamide (IV BuCy2) for hematologic malignancies prior to allogeneic stem cell transplantation: A phase II study. *Biol Blood Marrow Transplant*. 2002; 8(3): 145-154. doi: [10.1053/bbmt.2002.v8.pm11939604](https://doi.org/10.1053/bbmt.2002.v8.pm11939604)
10. Kashyap A, Wingard J, Cagnoni P, et al. Intravenous versus oral busulfan as part of a busulfan/cyclophosphamide preparative regimen for allogeneic hematopoietic stem cell transplantation: Decreased incidence of hepatic venoocclusive disease (HVOD), HVOD-related mortality, and overall 100-day mortality. *Biol Blood Marrow Transplant*. 2002; 8(9): 493-500. doi: [10.1053/bbmt.2002.v8.pm12374454](https://doi.org/10.1053/bbmt.2002.v8.pm12374454)
11. Chewning JH, Castro-Malaspina H, Jakubowski A, et al. Fludarabine-based conditioning secures engraftment of second hematopoietic stem cell allografts (HSCT) in the treatment of initial graft failure. *Biol Blood Marrow Transplant*. 2007; 13(11): 1313-1323. doi: [10.1016/j.bbmt.2007.07.006](https://doi.org/10.1016/j.bbmt.2007.07.006)
12. Byrne BJ, Horwitz M, Long GD, et al. Outcomes of a second non-myeloablative allogeneic stem cell transplantation following graft rejection. *Bone marrow transplantation*. 2008; 41(1): 39-43. doi: [10.1038/sj.bmt.1705882](https://doi.org/10.1038/sj.bmt.1705882)