

Case Illustration

Hidradenoma Papilliferum

Kaoutar Laamari, MD*; Hanane Baybay, PhD; Samia Mrabat, MD; Zakia Douhi, MD; Sara Elloudi, PhD; Fatima Z. Mernissi, PhD

Department of Dermatology Venerology, University Hospital Hassan II, Fez, Morocco

*Corresponding author

Kaoutar Laamari, MD

Department of Dermatology Venerology, University Hospital Hassan II, Fez, Morocco; Tel. 00212673153435; E-mail: kaoutar.laamari@gmail.com

Article information

Received: February 10th, 2020; Revised: February 19th, 2020; Accepted: February 19th, 2020; Published: March 4th, 2020

Cite this article

Laamari K, Baybay H, Mrabat S, Douhi Z, Elloudi S, Mernissi FZ. Hidradenoma papilliferum. *Dermatol Open J.* 2020; 5(1): 10-11. doi: [10.17140/DRMTOJ-5-140](https://doi.org/10.17140/DRMTOJ-5-140)

A 45-year-old female patient presented with an asymptomatic nodule of 6-months duration in the vulva. On examination, a well-circumscribed nodule of size 1 cm was seen on inner aspect of left labium majus (Figure 1). The nodule was firm and non-tender. Dermoscopy showed pink and white structures with curvilinear vessels (Figures 2 and 3). Differential diagnoses considered were hidradenoma papilliferum or some other adnexal tumor, pyogenic granuloma, and a remote possibility of donovaniosis or amelanotic melanoma. The nodule was excised and sent for histopathological examination, which showed a dermal tumor with cells in papillary folds, tubules, and cystically dilated spaces. These findings were those of hidradenoma papilliferum.

mation is extremely rare.²

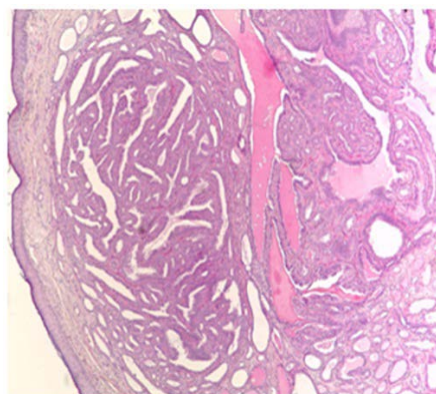
Figure 1. Hidradenoma Papilliferum-Nodule of 1 cm on Inner Aspect of Left Labium Majus



Figure 2. Hidradenoma Papilliferum: Pink and White Structures with Curvilinear Vessels



Figure 3. Hidradenoma Papilliferum: An Epithelial Proliferation of Tubular and Acinar Structures Coated by a Double Layer of Abundant Ductal Cells and Myoepithelial Cells on the Outer Layer



Hidradenoma papilliferum is an uncommon benign neoplasm arising from apocrine glands, seen in middle-aged females, commonly between the ages of 30-49-years. It usually presents as a firm, flesh to red-coloured nodule in the anogenital area.¹

The tumor has a good prognosis and malignant transfor-

CONSENT

The authors have received written informed consent from the patient.

CONFLICT OF INTEREST

The authors declare that they have no conflicts of interest.

REFERENCES

1. Daniel F, Mahmoudi A, de Parades V, Flejou JF, Atienza P. An uncommon perianal nodule: Hidradenoma papilliferum. *Gastroenterol Clin Biol.* 2007; 31: 166-168. doi: [10.1016/s0399-8320\(07\)89349-3](https://doi.org/10.1016/s0399-8320(07)89349-3)
2. Nirmala D, Rajnish K, Sunita S, Nidhi R. Hidradenoma papilliferum of the vulva: case report and review of literature. *Arch Gynecol Obstet.* 2011; 284: 1015-1017. doi: [10.1007/s00404-010-1784-7](https://doi.org/10.1007/s00404-010-1784-7)