

Research

Corresponding author

Hiroshi Bando, MD, PhD, FACP

Lecturer

Tokushima University and Kitajima

Taoka hospital

Nakashowa 1-61

Tokushima 770-0943, Japan

Tel. +81-90-3187-2485

E-mail: pianomed@bronze.ocn.ne.jp

Volume 3 : Issue 1

Article Ref. #: 1000DROJ3130

Article History

Received: January 24th, 2017

Accepted: February 13th, 2017

Published: February 13th, 2017

Citation

Bando H, Ebe K, Muneta T, Bando M, Yonei Y. Effect of low carbohydrate diet on type 2 diabetic patients and usefulness of M-value. *Diabetes Res Open J*. 2017; 3(1): 9-16. doi: [10.17140/DROJ-3-130](https://doi.org/10.17140/DROJ-3-130)

Copyright

©2017 Bando H. This is an open access article distributed under the Creative Commons Attribution 4.0 International License (CC BY 4.0), which permits unrestricted use, distribution, and reproduction in any medium, provided the original work is properly cited.

Effect of Low Carbohydrate Diet on Type 2 Diabetic Patients and Usefulness of M-Value

Hiroshi Bando, MD, PhD, FACP^{1*}; Koji Ebe, MD, PhD²; Tetsuo Muneta, MD, PhD³; Masahiro Bando, MD, PhD⁴; Yoshikazu Yonei, MD, PhD⁵

¹Tokushima University and Kitajima Taoka Hospital, Tokushima, Japan

²Takao Hospital, Kyoto, Kyoto Prefecture, Japan

³Muneta Maternity Clinic, Chiba, Japan

⁴Department of Nutrition and Metabolism, Institute of Biomedical Sciences, Tokushima University Graduate School, Tokushima, Japan

⁵Anti-Aging Medical Research Center, Graduate School of Life and Medical Sciences, Doshisha University, Kyoto, Japan

ABSTRACT

Background: Debate between the Calorie Restriction (CR) and Low-Carbohydrate Diet (LCD) has been continued for several years. We have started LCD therapy for diabetic patients since 1999, and experienced good response to control hyperglycemia. Recently the risk of postprandial hyperglycemia for cardiovascular events is reported, and the range of glucose level is focused. Morbus (M) value is proposed to be a good index to show the range of glucose fluctuation. Usefulness of LCD and usefulness of M-value were shown by combined analysis.

Methods: Twenty-six patients with Type 2 Diabetes Mellitus (T2DM), who admitted to the Takao Hospital, were the subjects. They were 12 males and 14 females, and their age ranged from 38 to 78 years old. A few patients were new patients, but mostly referred from other hospitals to receive LCD treatment. All patients started from CR therapy with 60% carbohydrate for 2 days, and then carried out LCD dietary therapy with 12% carbohydrates for 10-12 days. On day 2 and 12, blood glucose level was measured at 7 points a day to see the fluctuation from morning to night. Blood and urinary samples were corrected on the same day to get ordinary biochemical data and metabolic marker.

Results: To know the effect of LCD on different level of HbA1c, the patients were grouped to low (L; 6.1±0.5%), middle (M; 7.9±0.4%) and high (H; 9.2±0.7%) by HbA1c value. The M-values after 2 day CR were 26.1 (L), 94.1 (M) and 343 (H), respectively. The LCD therapy decreased M-value to 10.4 (L), 18.8 (M) and 84.2 (H), respectively. The significant reduction of M-values was a reflection of the improved postprandial glucose level. LCD was effective even in the bad controlled diabetic patients. In addition to the decreased triacylglycerol and 24 hr urinary C-peptide, uric acid increased in all patients.

Conclusion: Ten to 12 day-dietary therapy with LCD was quite effective to improve blood glucose profile. Patients with high HbA1c could be safely treated by LCD. Blood glucose improvement was well correlated to the M-value.

KEYWORDS: Low-carbohydrate diet (LCD); Mean amplitude of glycemic excursions (MAGE); Morbus value (M-value); Type 2 Diabetes Mellitus (T2DM).

ABBREVIATIONS: LCD: Low-Carbohydrate Diet; CR: Calorie Restriction; T2DM: Type 2 Diabetes Mellitus; MAGE: Mean Amplitude of Glycemic Excursions; M-value: Morbus value; HOMA-R: Homeostasis Model Assessment insulin Resistance; HOMA-β: Homeostasis Model Assessment Beta-cell function.

INTRODUCTION

In both developed and developing countries, diabetes mellitus has explosively increased, and there has been a lot of ongoing discussion regarding calorie restriction (CR) and low-carbohydrate diet (LCD) for dietary treatment. LCD was originally developed by Bernstein, Atkins and others,^{1,2} and now it becomes a universal topic of discussion.³⁻⁸

The Japanese Dietetic Association recommended taking 50-60 % carbohydrate, but our group treated DM patients by LCD with 12% carbohydrate since 1999, and experienced a good response and prognosis.⁹⁻¹³ LCD often accompanied with increase of ketone bodies as a toxic substance, but recent study found the physiological role of beta-hydroxybutyrate, especially in the normal delivery and very low carbohydrate treatment was effective to treat gestational diabetes.¹³ It caused a paradigm change to use LCD for the treatment of diabetes.

Recently, postprandial hyperglycemia is reported to be a risk factor of cardiovascular events. Several evaluation methods, such as M-value and mean amplitude of glycemic excursions (MAGE) have been proposed to estimate the risk.¹⁴⁻¹⁸ Efficacy of these indexes under the LCD dietary treatment needed to be analyzed. By combining these 2 streams, we have investigated blood glucose changes in diabetic patients under a controlled meal of CR and LCD in the light of diabetic and M-value aspects.

SUBJECTS AND METHODS

The subjects of the study were 26 T2DM patients who planned to receive LCD therapy for 2 weeks. They were 12 males and 14 females, with an average age 62.6±8.6 years old, ranging from 38 to 78 years old. A few patients were newly diagnosed with T2DM, but mostly transferred from other hospitals with a wish to be treated by LCD. Before beginning with LCD, they were instructed well about it. They received the same treatment protocol for endocrine and metabolic examination.

The study began with providing a conditioning CR diet to the patients for 2 days. CR diet included carbohydrates 60%, protein 15%, and lipids 25% with 1400 kcal/day according to the standard dietary therapy of the Japan Diabetic Society. Whereas, the diet for LCD was composed of carbohydrates 12%, protein 24%, lipids 64% with 1400 kcal/day according to the LCD method.^{9,12} Total intake of calorie was adjusted properly by the size or weight of the patients.

The schedule and protocol during admission were as follows:

1. On admission, HbA1c and other biochemical data were collected. In the early morning on day 2, several biomarkers such as lipids and daily profile of glucose were measured.
2. On day 2 and 3, urinary excretion of C-peptide for 24 hours

was measured. The dietary energy of CR and LCD was adjusted to 1400 kcal in average. On day 3 CR was changed to LCD.

3. On day 12, the daily profile of blood glucose and biomarkers were measured.
4. The daily profiles of blood glucose on day 2 and 12 were analyzed with the following method.

Statistical Analysis

For statistical analysis, all 26 patients were classified into 3 groups according to their HbA1c level on the admission; the low (L) group: less than 6.9%, middle (M) group: 7.0-8.4%, high (H) group: more than 8.5%.

The average blood glucose was calculated by the mean amplitude of glycemic excursions (MAGE), M-value, and the data between CR and LCD were compared.

The calculation of M-value is performed as follows; 1) the optimal blood glucose is set at 0, as the standard, 2) the example is 100 mg/dL, 3) the further the blood glucose value deviates from the standard, the greater will be the point assigned.

Practically M-value was calculated by the following formula:

$$M\text{-value} = \frac{\sum}{N} \left| M \frac{BS}{BS} \right| + W / 20 \quad \text{where } M \frac{BS}{BS} = \left| 10 \log \frac{PG}{120} \right|^3$$

M-value (Morbus value) is a logarithmic transformation of the deviation of glycemia from an arbitrary assigned "ideal" glucose value, with an expression of both the mean glucose value and the effect of glucose swings.^{14,15,19} The formula is as follows: $M = M^{BS} + M^W$, where $M^W = (\text{maximum blood glucose} - \text{minimum glucose}) / 20$; M^{BS} = the mean of MBSBS; MBSBS = individual M-value for each blood glucose value calculated as (absolute value of $[10 \times \log(\text{blood glucose value} / 120)]$).¹⁹

The standard range of M-value is <180, borderline is 180-320 and abnormal is >320. Whereas, in the M^{BS} value, the standard range is <5, borderline is 5-10 and abnormal is >10. It was reported that multiple sampling and a 7-point glycemic trial per day would yield similar results.^{16,20}

Data was represented as the mean±standard deviation when the data were normal distribution. Pearson's correlation coefficients were calculated using the JMP (Version 8) statistical analysis software (JMP Japan Division of SAS Institute Japan Ltd., Minato-ku, Tokyo, Japan) and Microsoft Excel analytical tool.

Intergroup comparisons were made using the Wilcoxon rank sum test or the Bonferroni multiple comparison (Lambert

method). A significance level of less than 5% obtained using a two-tailed test was considered to be statistically significant.

Ethical Considerations

The present study was conducted in compliance with the ethical principles of the Declaration of Helsinki and Japan's Act on the Protection of Personal Information along with the Ministerial Ordinance on Good Clinical Practice (GCP) for Drug (Ordinance of Ministry of Health and Welfare No. 28 of March 27, 1997). Informed consent was obtained from the patients concerning this trial. The study was registered in advance with UMIN #R000029006.

RESULTS

Anthropometric data of the patients

Subjects were divided into 3 groups according to the HbA1c value, and the data recorded by examining the subjects is shown in Table 1. Low (L), middle (M) and high (H) groups are composed

of 9, 9, 8 patients, respectively, and their HbA1c values were 6.1±0.5%, 7.9±0.4%, 9.3±0.8%. BMI and abdominal circumference are slightly high in the H group.

Blood glucose under CR and LCD therapy

The daily blood glucose changes by 7 points have been shown according to the three groups for CR (day 2) and LCD (day 12) (Figure 1).

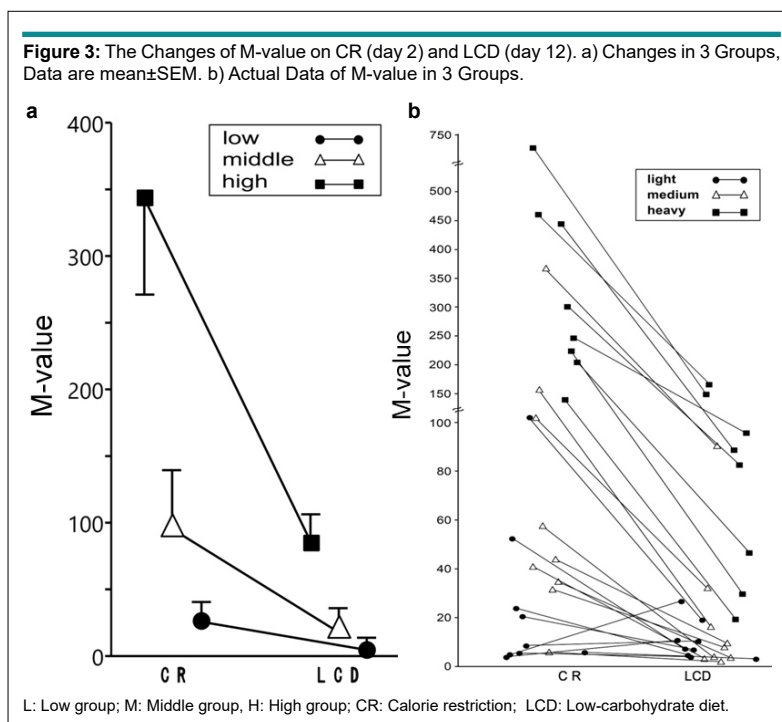
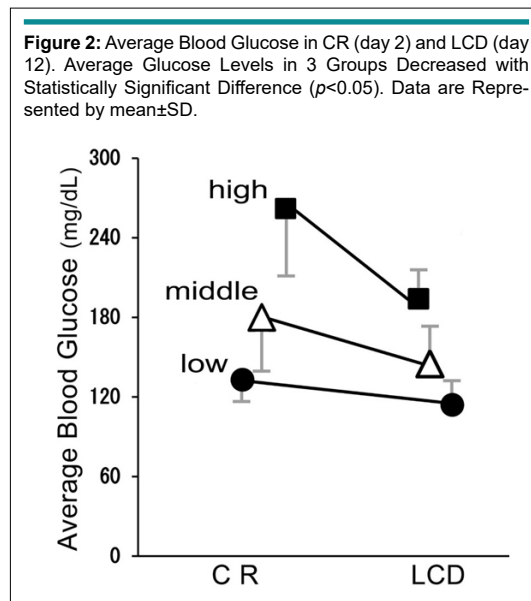
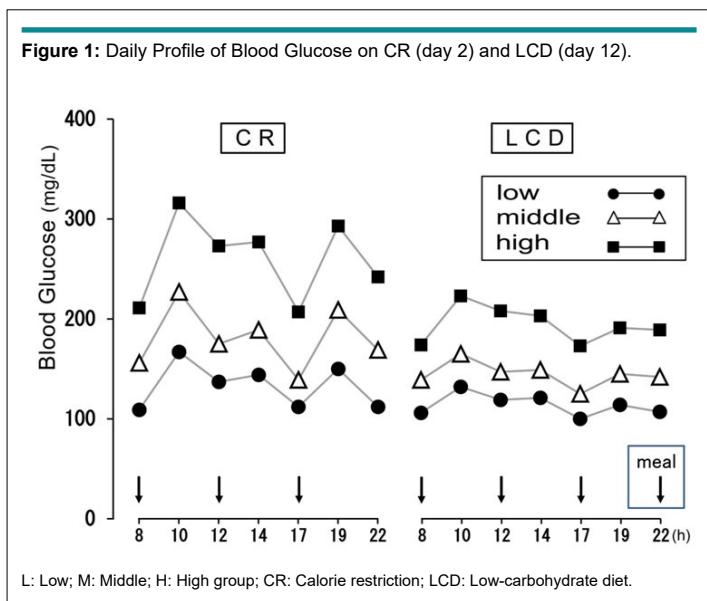
The average glucose levels improved by LCD therapy from 133±17 mg/dL to 114±22 mg/dL in L group, from 180±45 mg/dL to 145±28 mg/dL in M group, and from 262±51 mg/dL to 194±26 mg/dL in H group ($p<0.05$ in all groups) (Figure 2).

M-value in CR and LCD

The changes of the M-value of blood glucose from CR (day 2) to LCD (day 12) are shown in Figure 3. The median levels of M-value at CR and LCD were: 7.1 and 7.2 in L group, 50.8 and 8.8

Table 1: Data of the Subjects Classified in 3 Groups.			
	Low group	Middle group	High group
1. Anthropometry			
Number	9	9	9
Male/female	5/4	4/5	3/5
Age (years, mean±SD)	57.2±11.1	64.7±11.2	63.7±5.7
Body mass index (kg/m ²)	23.3±2.3	24.4±3.7	25.6±4.1
Abdominal circumference (cm)	84.4± 7.2	85.7±9.0	89.8± 9.5
2. Data on admission			
HbA1c (%)*	6.1±0.5	7.9±0.4	9.3±0.7
HOMA-R*	3.3 (2.2-3.8)	2.7 (1.6-5.2)	2.7 (1.8-4.3)
HOMA-β*	78.4 (60.6-83.1)	29.5 (12.5-60.1)	11.8 (9.1-25.1)
eGFR (mL/min)	91.8±23.5	86.1±30.7	104±31.3
Urinary Uric acid/cre	0.42±0.14	0.53±0.16	0.63±0.13
3. Data on day 2			
Fasting glucose (mg/dL)*	109.0±27.3	155.4±35.7	210.7±52.9
Glucose-120 min (mg/dL)*	167.8±56.4	217.7±72.3	329.8±32.5
M-value*	26.1±34.7	94.1±11.2	343.0±192.0
Triglyceride (mg/dL)	106.0±68.6	131.6±75.5	163.7±84.4
Uric acid (mg/dL)	5.5±1.5	5.7±1.1	4.9±0.9
4. Data on day 12			
Fasting glucose (mg/dL)	98.3±14.2	121.5±23.9	130.0±27.8
Glucose-120 min (mg/dL)	118.4±20.9	142.2±34.7	164.8±47.1
M-value*	10.4±7.9	18.8±28.4	84.2±52.7
Triglyceride (mg/dL)	70.0±28.8	83.3±15.6	125.0±38.2
Uric acid (mg/dL)	6.5±1.8	6.8±1.9	6.2±1.2
Elevation of UA (mg/dL)*	0.55 (0.28-0.93)	0.95 (0.45-1.37)	1.15 (0.6-1.8)

Data are expressed as mean±SD.
*: median [25-75 percentile].
*: significant difference ($p<0.05$) each other among 3 groups.



in M group, 273.2 and 85.3 in H group, respectively (Figure 3a). The actual changes of M-value in all individual patients were shown in Figure 3b.

Urinary C-Peptide in CR and LCD

Urinary C-peptide in 24 hours was measured on day 2 (CR) and on day 3 (LCD) (Figure 4a). The median values of urinary C-peptide by CR were: L: 94.0 mg/day, M: 61.0 mg/day, and H: 70.5 mg/day, respectively, and those by LCD was 65.5(L), 47.5(M) and 46.5 mg/dL (H), respectively. By paired-T analyses,

three groups showed a statistically significant decrease ($p < 0.05$).

The urinary C-Peptide excretion by CR (day 2) and by LCD (day 3) showed statistically positive correlation of ($p < 0.01$).

TG and Uric Acid

The changes in triglyceride value from CR (day 2) to LCD (day 12) are shown in Figure 4b. TG from day 2 to day 12, there was a statistically significant decrease, which was < 0.05 , < 0.01 , < 0.01 ,

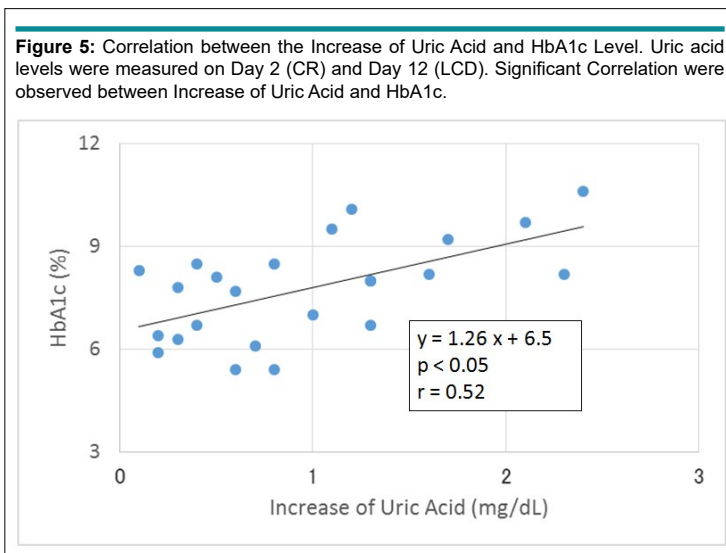
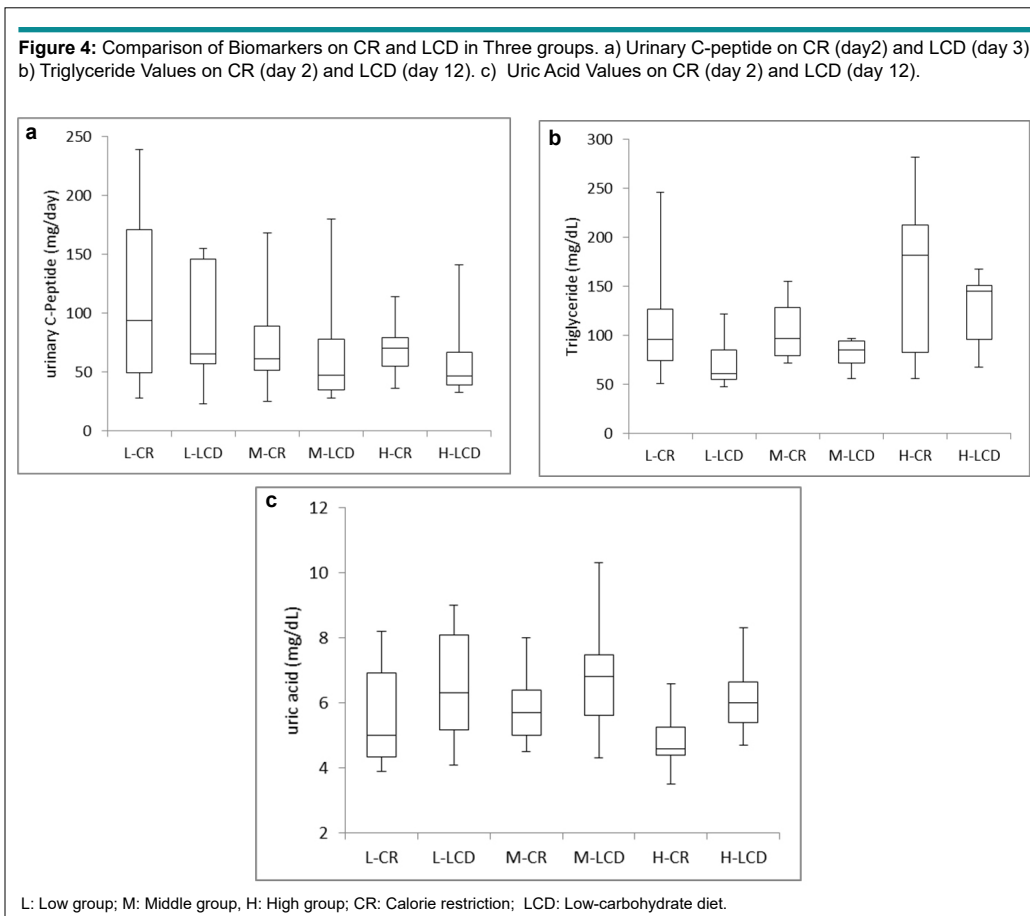
respectively.

Median levels of TG value are: L: 96 mg/dL and 61 mg/dL, M: 97 mg/dL and 85.5 mg/dL, H: 182 mg/dL and 145 mg/dL, respectively.

The changes in uric acid value from CR (day 2) to LCD (day 12) are shown in Figure 4c. The median levels by CR

were: 5.0 mg/dL (L group), 5.7 mg/dL (M group), and 4.6 mg/dL (H group), respectively. It increased to 6.3 mg/dL in L group, 6.8 mg/dL in M group, and 6.0 mg/dL in H group, respectively. These elevation was statistically significant ($p < 0.05$) in all three groups.

There is a significant correlation between increase of uric acid and HbA1c levels (Figure 5).



DISCUSSION

The clinical effects of LCD have been recognized by many case reports.^{1-3,7} In Japan, our group have led a role to develop LCD diet for obesity and diabetic patients by a lot of books and reports.⁸⁻¹³ In this report, we investigated the clinical effects of LCD in relation with M-value.

Even though the subjects of this study were very heterogeneous, all patients showed a good response to the short term LCD therapy. Individual response was well shown by the change of M-value. Two day conditioning with CR was useful to determine the will and safe introduction of very low carbohydrate diet. Carbohydrate intake by CR was 210 g and that by LCR was 42 g. Definition of LCD has not yet made, but 40% carbohydrate is recommended by the American Diabetic Association. Our very low carbohydrate diet was effective on all stage of diabetes, and contributed to reduce the dose of drug administration in most patients.

LCD improved many aspects, such as improvement of hyperglycemia, hyperinsulinemia, hyperlipidemia, etc. Decreased urinary C-peptide suggested the suppression of insulin secretion per day up to three-fourth times, because the regression curve showed $y=0.73x+7.8$.

Recently, a risk of post-prandial hyperglycemia for the cardiovascular events is recognized. Fasting glucose and/or HbA1c could not show the above risk. Several methods have been proposed, like MAGE¹⁵ and M-values.¹⁴ Initially, Schlichtkrull¹⁴ measured the blood glucose levels 20 times per day. However, multiple sampling and 7-point glycemic trial per day have yielded similar results.^{16,20}

In this study, M-values of the 3 groups were significantly decreased by LCD therapy. M-value can be a clinically useful index for evaluating the glucose profile of diabetic patients.

As for the glucose fluctuation, the following 5 markers would be valuable:^{16,21} 1) The mean amplitude of glycemic excursions (MAGE), 2) standard deviation (SD), 3) the mean of the daily difference (MODD), which are calculated *via* continuous glucose monitoring (CGM).^{22,23} 4) M-value, which estimates both average and fluctuation of blood glucose, and 5) 7-point glycemic trial, which is prevalent in-patients admitted in the hospital.^{16,21-23} Markers 4) and 5) were applied in this report, that can be easily calculated using a free software Excel by internet.

The continuous glucose monitoring (CGM) measurement for 48 hours would be ideal,^{24,25} but the 7-times method would be simple and useful without invasion. Seven points are before and 2 hours after each meal and at night before sleep. Our average blood glucose data, classified into 3 groups according to HbA1c value, were compatible for the two reports. One is the comparison between HbA1c and average blood glucose values,²⁶ and the other is reporting the regression correlation, estimated

average glucose (eAG) (mg/dL)= $28.7 \times A1c - 46.7$.²⁷ In the future, glucose variability may be considered more important, due to its influence on cognitive ability.²⁸

LCD lowered TG levels in only 10 days, which were consistent with previous reports of LCD.²⁹ The uric acid level was significantly elevated by LCD, and the elevated degree was significantly correlated with HbA1c. From our clinical experience with the LCD diet in thousands of patients, the changes in uric acid levels ran the gamut from increase, stabilization and decrease. One of the causes for elevated uric acid levels would be the insufficiency of total calorie intake in addition to LCD. If the total calorie intake per day were increased to the proposed necessary energy level stated by the Ministry of Welfare and Labor, then uric acid levels could remain within the normal range.

There are several reports indicating a significant correlation between uric acid values and insulin resistance.³⁰⁻³² As the influence of LCD for renal function has been in discussion,^{33,34} the metabolism and changes of uric acid metabolism will be involved in the effect of LCD. So far, any report concerning uric acid elevation and LCD could not be found. As such, the relationship between these two factors is a subject for future study.

CONCLUSION

Ten to 12 day- dietary therapy with LCD was quite effective to improve blood glucose profile. Patients with high HbA1c could be safely treated by LCD. Blood glucose improvement was well correlated to the M-value.

LCD improved many aspects, such as improvement of hyperglycemia, hyperinsulinemia, hyperlipidemia, etc. The uric acid level was significantly elevated by LCD, and the elevated degree was significantly correlated with HbA1c. It needs further study whether LCD itself causes elevation of uric acid or insufficient calorie intake would be the cause.

ACKNOWLEDGEMENT

The introduction of this article was presented at the 89th Scientific Meeting of Japan Endocrine Society (JES) Annual Congress, Kyoto, 2016, and we intend to present the entire study at the 90th Meeting of JES, Kyoto, Japan, 2017. The authors would like to thank the patients and staff for their cooperation and support.

CONFLICTS OF INTEREST

The authors declare that they have no conflicts of interest.

REFERENCES

- Bernstein RK. *Dr. Bernstein's Diabetes Solution: The Complete Guide to Achieving Normal Blood Sugars*. 4th ed. Boston, MA, USA. Little, Brown and Company; 2011.

2. Atkins RC. *Dr Atkins' New Diet Revolution*. New York city, NY, USA: HarperCollins; 2001.
3. Shai I, Schwarzfuchs D, Henkin Y, et al. Weight loss with a low-carbohydrate, mediterranean, or low-fat diet. *N Engl J Med*. 2008; 359: 229-241. doi: [10.1056/NEJMoa0708681](https://doi.org/10.1056/NEJMoa0708681)
4. Foster GD, Wyatt HR, Hill JO, et al. Weight and metabolic outcomes after 2 years on a low-carbohydrate versus low-fat diet: A randomized trial. *Ann Intern Med*. 2010; 153: 147-157. doi: [10.7326/0003-4819-153-3-201008030-00005](https://doi.org/10.7326/0003-4819-153-3-201008030-00005)
5. Schwarzfuchs D, Golan R, Shai I. Four-year follow-up after two-year dietary interventions. *N Engl J Med*. 2012; 367: 1373-1374. doi: [10.1056/NEJMc1204792](https://doi.org/10.1056/NEJMc1204792)
6. McVay MA, Voils CI, Coffman CJ, et al. Factors associated with choice of a low-fat or low-carbohydrate diet during a behavioral weight loss intervention. *Appetite*. 2014; 83: 117-124. doi: [10.1016/j.appet.2014.08.023](https://doi.org/10.1016/j.appet.2014.08.023)
7. Atallah R, Fillion KB, Wakil SM. Long-term effects of 4 popular diets on weight loss and cardiovascular risk factors: A systematic review of randomized controlled trials. *Circ Cardiovasc Qual Outcomes*. 2014; 7: 815-827. doi: [10.1161/CIRCOUTCOMES.113.000723](https://doi.org/10.1161/CIRCOUTCOMES.113.000723)
8. Gow ML, Garnett SP, Baur LA, Lister NB. The effectiveness of different diet strategies to reduce type 2 diabetes risk in youth. *Nutrients*. 2016; 9: 8(8). pii: E486. doi: [10.3390/nu8080486](https://doi.org/10.3390/nu8080486)
9. Ebe K, Ebe Y, Yokota S, et al. Low carbohydrate diet (LCD) treated for three cases as diabetic diet therapy. *Kyoto Medical Association Journal*. 2004; 51: 125-129.
10. Bando H, Nakamura T. Carbo-count therapy and low carbohydrate diet (LCD). *The Journal of the Therapy*. 2008; 90: 3105-3111.
11. Bando H, Ebe K, Nakamura T. New era of low carbohydrate diet: Clinical efficacy with more than 2000 cases in Japan for the treatment of metabolic syndrome. 2014. *World Organization of Family Doctors-19th Europe Conference*. Lisbon, Portugal.
12. Bando H, Ebe K, Nakamura T, Bando M, Yonei Y. Low carbohydrate diet (LCD): Long and short-term effects and hyperketonemia. *Glycative Stress Research*. 2016; 3 (4): 193-204. Web site. <http://www.toukastress.jp/webj/article/2016/GS16-18.pdf>. Accessed January 23, 2017.
13. Muneta T, Kawaguchi E, Nagai Y, et al. Ketone body elevation in placenta, umbilical cord, newborn and mother in normal delivery. *Glycative Stress Research*. 2016; 3 (3): 133-140. Web site. <http://www.toukastress.jp/webj/article/2016/GS16-10.pdf>. Accessed January 23, 2017.
14. Schlichtkrull J, Munck O, Jersild M. The M-value, an index of blood sugar control in diabetics. *Acta Med Scand*. 1965; 177: 95-102. doi: [10.1111/j.0954-6820.1965.tb01810.x](https://doi.org/10.1111/j.0954-6820.1965.tb01810.x)
15. Service FJ, Molnar GD, Rosevear JW, Ackerman E, Gatewood LC, Taylor WF. Mean amplitude of glycemic excursions, a measure of diabetic instability. *Diabetes*. 1970; 19: 644-655. doi: [10.2337/diab.19.9.644](https://doi.org/10.2337/diab.19.9.644)
16. Siegelaar SE, Holleman F, Hoekstra JBL, Devries JH. Glucose variability; Does it matter? *Endocrine Reviews*. 2010; 31(2): 171-182. doi: [10.1210/er.2009-0021](https://doi.org/10.1210/er.2009-0021)
17. Moberg E, Kollind M, Lins PE, Adamson U. Estimation of blood-glucose variability in patients with insulin-dependent diabetes mellitus. *Scand J Clin Lab Invest*. 1993; 53: 507-514
18. Monnier L, Lapinski H, Colette C. Contribution of fasting and postprandial plasma glucose increments to the overall diurnal hyperglycemia of type 2 diabetic patients: Variations with increasing levels of HbA1c. *Diabetes Care*. 2003; 26: 881-885. doi: [10.2337/diacare.26.3.881](https://doi.org/10.2337/diacare.26.3.881)
19. Service FJ. Glucose variability. *Diabetes*. 2013; 62(5): 1398-1404. doi: [10.2337/db12-1396](https://doi.org/10.2337/db12-1396)
20. Monnier L, Colette C. Glycemic Variability: Can We Bridge the Divide Between Controversies? *Diabetes Care*. 2011; 34(4): 1058-1059. doi: [10.2337/dc11-0071](https://doi.org/10.2337/dc11-0071)
21. Monnier L, Colette C, Owens DR. Glycemic variability: The third component of the dysglycemia in diabetes. Is it important? How to measure it? *J Diabetes Sci Technol*. 2008; 2(6):1094-1100. Web site. <https://www.ncbi.nlm.nih.gov/pmc/articles/PMC2769808/pdf/dst-02-1094.pdf>. Accessed January 23, 2017.
22. McDonnell CM, Donath SM, Vidmar SI, Werther GA, Cameron FJ. A novel approach to continuous glucose analysis utilizing glycemic variation. *Diabetes Technol Ther*. 2005; 7: 253-263. doi: [10.1089/dia.2005.7.253](https://doi.org/10.1089/dia.2005.7.253)
23. Molnar GD, Taylor WF, Ho MM. Day-to-day variation of continuously monitored glycaemia: A further measure of diabetic instability. *Diabetologia*. 1972; 8(5): 342-348. doi: [10.1007/BF01218495](https://doi.org/10.1007/BF01218495)
24. Rodbard D. New and improved methods to characterize glycemic variability using continuous glucose monitoring. *Diabetes Technol Ther*. 2009; 11(9): 551-565. doi: [10.1089/dia.2009.0015](https://doi.org/10.1089/dia.2009.0015)
25. Baghurst P. Calculating the mean amplitude of glycemic excursion from continuous glucose monitoring data: An automated algorithm. *Diabetes Technol Ther*. 2011; 13(3): 296-302. doi: [10.1089/dia.2010.0090](https://doi.org/10.1089/dia.2010.0090)
26. Borg R, Kuenen JC, Carstensen B, et al. ADAG Study

- Group. HbA1(c) and mean blood glucose show stronger associations with cardiovascular disease risk factors than do postprandial glycaemia or glucose variability in persons with diabetes: The A1C-Derived Average Glucose (ADAG) study. *Diabetologia*. 2011; 54(1): 69-72. doi: [10.1007/s00125-010-1918-2](https://doi.org/10.1007/s00125-010-1918-2)
27. Nathan DM, Kuenen J, Borg R, Zheng H, Schoenfeld D, Heine RJ. The A1c-derived average glucose (ADAG) study group translating the A1C assay into estimated average glucose values. *Diabetes Care*. 2008; 31: 1473-1478. doi: [10.2337/dc08-0545](https://doi.org/10.2337/dc08-0545)
28. Rizzo MR, Marfella R, Barbieri M, et al. Relationships between daily acute glucose fluctuations and cognitive performance among aged type 2 diabetic patients. *Diabetes Care*. 2010; 33(10): 2169-2174. doi: [10.2337/dc10-0389](https://doi.org/10.2337/dc10-0389)
29. Caminhoto R, Fonseca FL, Castro NC, Arantes JP, Sertié RA. Atkins diet program rapidly decreases atherogenic index of plasma in trained adapted overweight men. *Arch Endocrinol Metab*. 2015; 59(6): 568-571. doi: [10.1590/2359-3997000000106](https://doi.org/10.1590/2359-3997000000106)
30. Vuorinen-Markkola H, Yki-Jarvinen H. Hyperuricemia and insulin resistance. *J Clin Endocrinol Metab*. 1994; 78: 25-29. doi: [10.1210/jcem.78.1.8288709](https://doi.org/10.1210/jcem.78.1.8288709)
31. Davidson MB. Clinical implications of insulin resistance syndrome. *Am J Med*. 1995; 99: 420-426. doi: [10.1016/S0002-9343\(99\)80191-0](https://doi.org/10.1016/S0002-9343(99)80191-0)
32. Jeppesen J, Facchini FS, Reaven GM. Individuals with high total cholesterol/HDL ratios are insulin resistant. *J Intern Med*. 1998; 243: 293-298. doi: [10.1046/j.1365-2796.1998.00301.x](https://doi.org/10.1046/j.1365-2796.1998.00301.x)
33. Friedman AN, Ogden LG, Foster GD, et al. Comparative effects of low-carbohydrate high-protein versus low-fat diets on the kidney. *Clin J Am Soc Nephrol*. 2012; 7(7): 1103-1111. doi: [10.2215/CJN.11741111](https://doi.org/10.2215/CJN.11741111)
34. Feinman RD, Pogozelski WK, Astrup A, et al. Dietary carbohydrate restriction as the first approach in diabetes management: Critical review and evidence base. *Nutrition*. 2015; 31: 1-13. doi: [10.1016/j.nut.2014.06.011](https://doi.org/10.1016/j.nut.2014.06.011)