

Brief Research Report

Corresponding author

David S. Black, PhD, MPH
Department of Preventive Medicine
USC School of Medicine, 2001 N. Soto
Street Suite 302D, Los Angeles, CA
90032-9239, USA
E-mail: davidbla@usc.edu

Volume 1 : Issue 1

Article Ref. #: 1000NOJ1106

Article History

Received: September 26th, 2014

Accepted: November 5th, 2014

Published: November 12th, 2014

Citation

Kurth F, Luders E, Wu B, Black DS. Brain gray matter changes associated with mindfulness meditation in older adults: An exploratory pilot study using voxel-based morphometry. *Neuro Open J.* 2014; 1(1): 23-26. doi: [10.17140/NOJ-1-106](https://doi.org/10.17140/NOJ-1-106)

Copyright

©2014 Black DS. This is an open access article distributed under the Creative Commons Attribution 4.0 International License (CC BY 4.0), which permits unrestricted use, distribution, and reproduction in any medium, provided the original work is properly cited.

Brain Gray Matter Changes Associated with Mindfulness Meditation in Older Adults: An Exploratory Pilot Study using Voxel-based Morphometry

Florian Kurth¹, Eileen Luders¹, Brian Wu² and David S. Black^{3*}

¹Department of Neurology, UCLA School of Medicine, Los Angeles, CA 90095, USA

²USC School of Medicine, Los Angeles, CA 90032, USA

³Department of Preventive Medicine, USC School of Medicine, Los Angeles, CA 90032, USA

ABSTRACT

Background: Mindfulness-based interventions (MBIs) have previously been associated with structural gray matter changes in normal healthy adults. However, it remains unknown if standardized MBIs can induce similar changes in older adults and those with health complaints as well. The objective of this investigation was to examine the effect of a standardized MBI on the gray matter tissue of older adults with sleep disturbances.

Methods: This exploratory single-group pilot longitudinal study examined local gray matter changes over a six-week MBI period. Participants included six older adult community volunteers (M=66.5 years of age, SD=5.5, range=58-75; 66% female) with sleep disturbances recruited through advertisement in local newspapers/flyers posted at a university medical center and affiliated clinics in Los Angeles, CA. The MBI was delivered as a weekly, two-hour, six-session, group-based course in mindfulness meditation. Gray matter was measured voxel-wise pre- and post-intervention.

Results: A significant gray matter increase was identified within the precuneus, possibly implicating meditation-induced changes of the default mode network. In contrast, observed significant gray matter decreases may have been driven by MBI-related remediation of brain architecture subserving sleep complaints.

Conclusions: Exploratory findings suggest that mindfulness meditation practice is associated with a detectable alteration of cerebral gray matter in older adults.

KEYWORDS: Mindfulness; Meditation; Aging; Brain imaging; Voxel-based morphometry.

INTRODUCTION

Mindfulness-based Interventions (MBIs) train participants in formalized and systematic mainstreamed mindfulness meditation practices, which are shown to impart significant improvements in stress-related ailments in age groups spanning childhood¹ to adulthood.² Mind-body practices are more recently showing utility for improving the health of older adults.^{3,4} Neural mechanisms, both functional and structural, may underlie some of these observed benefits. As shown with magnetic resonance imaging, MBIs as brief as eight weeks can modulate the brain structure of young and mid-aged adults,^{5,6} and several cross-sectional studies note significant links between mindfulness practice and gray matter configuration.⁷⁻¹⁰ However, as the effects of MBIs on brain structure have been predominantly investigated in younger and middle-aged cohorts, it remains unknown if and how MBIs impact brain structure specifically in older adults.

In this exploratory, data-generating study, we examine pre-to-post changes in cerebral gray matter volume in older adults with sleep disturbance symptoms who participated in a

six-week formalized MBI. We applied voxel-based morphometry to detect potential significant changes in gray matter volume with an extremely high regional specificity (i.e., voxel by voxel) across the entire brain. To our knowledge, this is the first study focused solely on older adults to examine brain changes associated with participation in a mindfulness meditation program.

METHODS

Participants and Procedures

Participants included six older adult community volunteers ($M=66.5$ years of age, $SD=5.5$, range=58-75; 66% female; 100% Caucasian) recruited through advertisement in local newspapers/flyers posted at a university medical center and affiliated clinics in Los Angeles, CA, U.S.A. Participants were a subsample from a larger trial that examined the efficacy of a MBI on sleep complaints.¹¹ Except for the six subjects described here, the remainder of the sample did not undergo brain scans. Participants were eligible for the study if they were >55 years old, spoke English, and experienced current sleep complaints (Pittsburg Sleep Quality Index >5),¹² and spoke English. Participants were ineligible if they had a significant current practice of any form of meditation (>15 minutes daily) or depression (Patient Health Questionnaire >14).¹³ The UCLA Institutional Review Board approved all study procedures. Eligible respondents provided written informed consent prior to enrolling in the study. Eight visits to the study site were requested to complete the study protocol, including 1 pre-intervention brain scan, 6 MBI sessions, and 1 post-intervention brain scan. All scans were administered within 10 days pre- and post-intervention. Assessment visits included survey completion and MRI safety screening.

INTERVENTION

Mindful Awareness Practices for Daily Living (MAPs):

MAPs is a weekly, 2-hour, 6-session, group-based course in mindfulness meditation (see <http://marc.ucla.edu>). A certified teacher with over 20 years of mindfulness practice delivered the formalized program curriculum to study participants. An average of 10 to 30 minutes of mindful experiential practice is engaged in each class in addition to the teacher-delivered didactic material and group discussion. Participants are also provided with a book on mindfulness accompanied by a guided meditation CD for personal use (see Ref. 11 for more intervention details). Mindfulness practice is assigned as homework beginning with 5 minutes daily then advances to 20 minutes daily by final session. The MAPs program has been shown in previous work to attenuate psychological stress and increase levels of mindfulness in a community-based setting.¹⁴

Image Acquisition and Analysis

All brain images were acquired on a 1.5 T Siemens Sonata scanner (Erlangen, Germany) using an 8-channel head coil

and a T1-weighted MPRAGE sequence with the following parameters: 1900 ms TR, 4.38 ms TE, 15° flip angle, 160 contiguous sagittal slices, 256x256 mm² FOV, 1x1x1 mm³ voxel size. Brain images were processed using the SPM8 software (www.fil.ion.ucl.ac.uk/spm) and the VBM8 toolbox (dbm.neuro.uni-jena.de/vbm.html) with the protocol for longitudinal studies as previously described¹⁵ wherein images were smoothed with an 8 mm FWHM kernel. Voxel-wise gray matter was compared at baseline (t1) and follow-up (t2) using a paired t-test in SPM8. Results were corrected for multiple comparisons by controlling the Family-Wise Error (FWE) at cluster-level using a threshold of $p \leq 0.05$, adjusted for non-stationarity.¹⁶

RESULTS

As shown in Figure 1, the voxel-wise analysis revealed one cluster indicating significant gray matter increase in the right precuneus (247 voxels, cluster maximum [x;y;z]: 6; -64; 19, $p=2.4 \times 10^{-15}$) and decreases in the left prefrontal cortex (408 voxels, x;y;z: -39; 50; -8, $p=1.0 \times 10^{-10}$), right hippocampus (136 voxels, x;y;z: 24; -36; 3, $p=1.3 \times 10^{-7}$), right thalamus (199 voxels, x;y;z: 3; -21; 12, $p=1.7 \times 10^{-5}$), and right parietal cortex (311 voxels, x;y;z: 9; -45; 58, $p=1.8 \times 10^{-15}$).

DISCUSSION

Outcomes from this exploratory, data-generating, study demonstrate that after the course of a six-week standardized mindfulness meditation program, significant changes in local gray matter were observed in older adults with sleep complaints. Although mindfulness-induced gray matter changes have been detected and described previously,^{5,6} the current findings are particularly interesting given the mature age of the participants. Gray matter changes due to MBIs were previously reported in a group of young and healthy, albeit stressed, individuals.^{5,6} Such changes in brain anatomy observed in young populations, however, cannot be easily extrapolated to older adults. Our observed gray matter increase within the precuneus in the older adult brain corroborates a previous longitudinal MBI study, in which the cluster peak voxel was located in the neighboring posterior cingulate cortex.⁶ The cluster identified in our study, as well as the one from the previous mindfulness meditation study, are located in the posterior part of the default mode network,¹⁷ which is implicated in meditation training.¹⁸ The precuneus is central to the human experience of the phenomenological self, a process proposed to be essential to meditation practice.¹⁹ Although unanticipated, gray matter decreases observed in this study have been reported previously⁵ and in our study may constitute effects that are specific to the older age of our participants and/or to the brain architecture subserving the remediation of sleep complaints. As such, findings might not generalize to asymptomatic or younger adults. This study highlights the need for future research to investigate neuroplastic changes that are associated with mindfulness meditation in older adults. This new line of investigation is promising when considering the recent experimental research showing that mind-body practices can reduce psychological

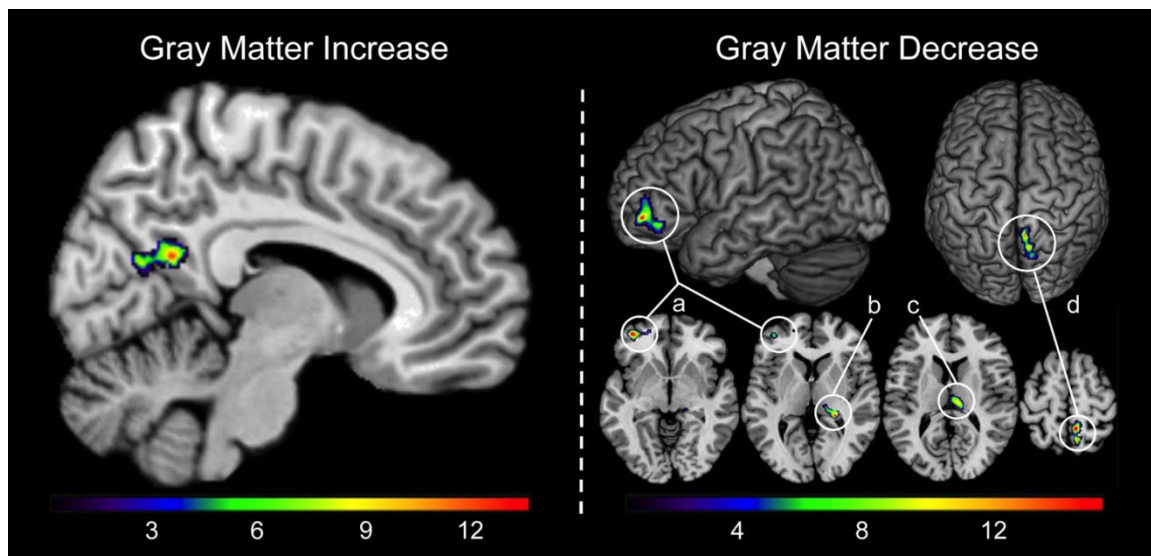


Figure 1: Significant increase and decrease in gray matter over the mindfulness meditation intervention period; threshold at $p \leq 0.05$ (corrected for multiple comparisons). The color bar encodes T-values. Significant gray matter increase was located in the right precuneus. Significant gray matter decreases were located in (a) the left prefrontal cortex, (b) the right hippocampus, (c) the right thalamus, and (d) the right parietal cortex.

ailments in older adults while also modulating immune cell parameters.^{3,4}

Limitations of this exploratory study include the pre-post observational design and lack of a control group, which limits interpretation of causal inference. Sample size was small and all participants were Caucasian and reported current sleep disturbances, thus statistical noise is a potential explanation for the results and the generalizability of findings is curtailed. Future controlled studies enrolling adequate sample sizes are needed to replicate our preliminary results in older adults.

CONFLICTS OF INTEREST

All authors report no actual or potential conflict of interest including any financial, personal or other relationships with other people or organizations that could inappropriately influence this work.

ACKNOWLEDGMENTS

Support for this work comes from the UCLA Older Americans Independence Center (AG028748), UCLA Clinical and Translational Science Institute (UL1TR000124), the Cousins Center for Psychoneuroimmunology, and NIH/NIMH (5T32-MH019925) to D.S.B. The authors wish to thank all research participants for the contribution to this study. We are also grateful to Trent Thixton who assisted with the acquisition of the image data. For generous support the authors also thank the Brain Mapping Medical Research Organization, the Robson Family and Northstar Fund,

and the following Foundations: Brain Mapping Support, Pierson-Lovelace, Ahmanson, Tamkin, William M. & Linda R. Dietel Philanthropic Fund at the Northern Piedmont Community, Jennifer Jones-Simon, and Capital Group Companies.

REFERENCES

1. Black DS, Milam J, Sussman S. Sitting-Meditation Interventions Among Youth: A Review of Treatment Efficacy. *Pediatrics*. 2009; 124(3): 532-541. doi: [10.1542/peds.2008-3434](https://doi.org/10.1542/peds.2008-3434)
2. Goyal M, Singh S, Sibinga EMS, et al. Meditation Programs for Psychological Stress and Well-Being. *JAMA Internal Medicine*. 2014; 174(3): 357-368.
3. Black DS, Irwin MR, Olmstead R, Ji E, Crabb Breen E, Motivala SJ. Tai chi meditation effects on nuclear factor-kappaB signaling in lonely older adults: a randomized controlled trial. *Psychother Psychosom*. 2014; 83(5): 315-317. doi: [10.1159/000359956](https://doi.org/10.1159/000359956)
4. Black DS, Cole SW, Irwin MR, et al. Yogic meditation reverses NF-kappaB and IRF-related transcriptome dynamics in leukocytes of family dementia caregivers in a randomized controlled trial. *Psychoneuroendocrinology*. 2013; 38(3): 348-355. doi: [10.1016/j.psyneuen.2012.06.011](https://doi.org/10.1016/j.psyneuen.2012.06.011)
5. Hölzel BK, Carmody J, Evans KC, et al. Stress reduction correlates with structural changes in the amygdala. *Social Cognitive and Affective Neuroscience*. 2010; 5(1): 11-17. doi: [10.1093/scan/nsp034](https://doi.org/10.1093/scan/nsp034)
6. Hölzel BK, Carmody J, Vangel M, et al. Mindfulness practice

- leads to increases in regional brain gray matter density. *Psychiatry Research: Neuroimaging*. 2011; 191(30): 36-43.
7. Hölzel BK, Ott U, Gard T, et al. Investigation of mindfulness meditation practitioners with voxel-based morphometry. *Social Cognitive and Affective Neuroscience*. 2008; 3(1): 55-61. doi: [10.1093/scan/nsm038](https://doi.org/10.1093/scan/nsm038)
8. Luders E, Kurth F, Toga AW, Narr KL, Gaser C. Meditation effects within the hippocampal complex revealed by voxel-based morphometry and cytoarchitectonic probabilistic mapping. *Frontiers in Psychology*. 2013. doi: [10.3389/fpsyg.2013.00398](https://doi.org/10.3389/fpsyg.2013.00398)
9. Luders E, Toga AW, Lepore N, Gaser C. The underlying anatomical correlates of long-term meditation: larger hippocampal and frontal volumes of gray matter. *NeuroImage*. 2009; 45(3): 672-678.
10. Kurth F, Mackenzie-Graham A, Toga AW, Luders E. Shifting brain asymmetry: the link between meditation and structural lateralization. *Soc Cogn Affect Neurosci*. 2014. doi: [10.1093/scan/nsu029](https://doi.org/10.1093/scan/nsu029)
11. Black DS, O'Reilly GA, Olmstead R, Breen EC, Irwin MR. Mindfulness-based intervention for prodromal sleep disturbances in older adults: Design and methodology of a randomized controlled trial. *Contemp Clin Trials*. 2014; 39(1): 22-27. doi: [10.1016/j.cct.2014.06.013](https://doi.org/10.1016/j.cct.2014.06.013)
12. Buysse DJ, Reynolds CF. 3rd, Monk TH, Berman SR, Kupfer DJ. The Pittsburgh Sleep Quality Index: a new instrument for psychiatric practice and research. *Psychiatry Res*. 1989; 28(2): 193-213. doi: [10.1016/0165-1781\(89\)90047-4](https://doi.org/10.1016/0165-1781(89)90047-4)
13. Kroenke K, Spitzer RL, Williams JB. The PHQ-9: validity of a brief depression severity measure. *J Gen Intern Med*. 2001; 16(9): 606-613.
14. Galla BM, O'Reilly GA, Kitil MJ, Smalley SL, Black DS. Community-Based Mindfulness Program for Disease Prevention and Health Promotion: Targeting Stress Reduction. *American Journal of Health Promotion : AJHP*. 2014.
15. Kurth F, Luders E, Sicotte NL, et al. Neuroprotective effects of testosterone treatment in men with multiple sclerosis. *NeuroImage Clinical*. 2014; 4: 454-460. doi: [10.1016/j.nicl.2014.03.001](https://doi.org/10.1016/j.nicl.2014.03.001)
16. Hayasaka S, Phan KL, Liberzon I, Worsley KJ, Nichols TE. Nonstationary cluster-size inference with random field and permutation methods. *Neuroimage*. 2004; 22(2): 676-687. doi: [10.1016/j.neuroimage.2004.01.041](https://doi.org/10.1016/j.neuroimage.2004.01.041)
17. Raichle ME, MacLeod AM, Snyder AZ, Powers WJ, Gusnard DA, Shulman GL. A default mode of brain function. *Proc Natl Acad Sci U S A*. 2001; 98(2): 676-682. doi: [10.1073/pnas.98.2.676](https://doi.org/10.1073/pnas.98.2.676)
18. Hölzel BK, Lazar SW, Gard T, Schuman-Olivier Z, Vago DR, Ott U. How Does Mindfulness Meditation Work? Proposing Mechanisms of Action From a Conceptual and Neural Perspective. *Perspectives on Psychological Science*. 2011; 6(6): 537. doi: [10.1177/1745691611419671](https://doi.org/10.1177/1745691611419671)
19. Vago DR, Silbersweig DA. Self-Awareness, Self-Regulation, and Self-Transcendence (S-ART): A Framework for Understanding the Neurobiological Mechanisms of Mindfulness. *Frontiers in Human Neuroscience*. 2012; 6(296). doi: [10.3389/fnhum.2012.00296](https://doi.org/10.3389/fnhum.2012.00296)