

## Illustration

# Bilateral Symmetric Thalamic Metastasis in a Patient with Small Cell Lung Cancer

Takeshi Saraya, MD, PhD<sup>1\*</sup>; Chie Shimura, MD<sup>2</sup>; Sayuki Inaoka, MD<sup>2</sup>; Hajime Takizawa, MD, PhD<sup>1</sup>

<sup>1</sup>Department of Respiratory Medicine, Kyorin University School of Medicine, Shinkawa Mitaka City, Tokyo, Japan

<sup>2</sup>Department of Radiology, Kyorin University School of Medicine, Shinkawa Mitaka City, Tokyo, Japan

### \*Corresponding author

Takeshi Saraya, MD, PhD

Department of Respiratory Medicine, Kyorin University School of Medicine, 6-20-2 Shinkawa Mitaka City, Tokyo 181-8611, Japan;

Tel/Fax: +81(0)-422-44-0671; E-mail: [sara@yd5.so-net.ne.jp](mailto:sara@yd5.so-net.ne.jp)

### Article information

Received: February 15<sup>th</sup>, 2018; Accepted: July 13<sup>th</sup>, 2018; Published: July 17<sup>th</sup>, 2018

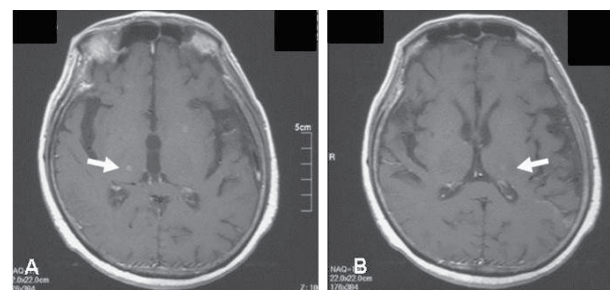
### Cite this article

Saraya T, Shimura C, Inayoka S, Takizawa H. Bilateral symmetric thalamic metastasis in a patient with small cell lung cancer. *Cancer Stud Mol Med Open J.* 2018; 4(1): 10. doi: [10.17140/CSMMOJ-4-123](https://doi.org/10.17140/CSMMOJ-4-123)

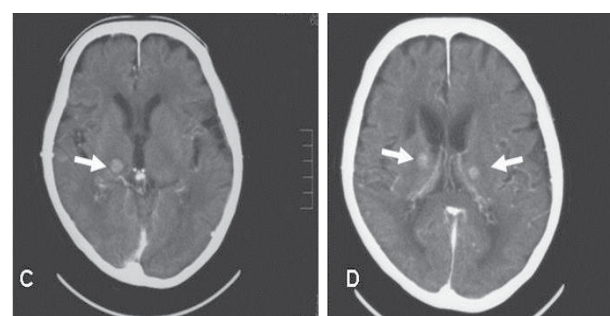
## OVERVIEW OF THE ILLUSTRATION

A 68-year old woman was referred to our hospital because of dry cough with persistent numbness in the extremities. Chest roentgenogram showed right hilar tumor with mediastinal lymphnode and brain magnetic resonance imaging (MRI) revealed multiple tiny nodules. After performing the transbronchial needle aspiration obtained from subcarinal lymphnode, she was diagnosed with small cell lung cancer (SCLC) accompanied by multiple brain metastasis (clinical stage IV: T4N3M1). After completion of four cycles of chemotherapy, the size of lung lesion was regressed together with complete resolution of brain lesions, and she discharged uneventfully. However, her numbness was remained. Four months later, she was hospitalized again for severe numbness in her trunk and extremities. Brain MRI (contrast-enhanced T1-weighted image) demonstrated new symmetric metastatic lesions in bilateral thalamus (Figure A and B) as well as left putamen. Another two months later, numbness exacerbated and spread from the top to toe with the growing of primary and bilateral thalamic metastatic lesions on computed tomography (CT) (Figure C and D). In spite of whole-brain irradiation, she had suffered from severe numbness, and died of obstructive pneumonia. To our knowledge, this is the first case of bilateral symmetric thalamic metastasis in SCLC with refractory numbness over the whole body.

**Figure A and B.** Brain MRI (contrast-enhanced T1-weighted image) Demonstrated New Symmetric Metastatic Lesions in Bilateral Thalamus (arrow heads) as well as Left Putamen.



**Figure C and D.** Head CT with Contrast-media Depicted that Bilateral Thalamic Metastatic Lesions are getting Larger in Size.



Submit your article to this journal | <https://openventio.org/submit-manuscript/>

© Copyright 2018 by Saraya T. This is an open-access article distributed under Creative Commons Attribution 4.0 International License (CC BY 4.0), which allows to copy, redistribute, remix, transform, and reproduce in any medium or format, even commercially, provided the original work is properly cited.