

Illustration

*Corresponding author

Takeshi Saraya, MD, PhD

Assistant Professor

Department of Respiratory Medicine

Kyorin University School of Medicine

6-20-2 Shinkawa, Mitaka City

Tokyo 181-8611, Japan

Tel. +81 (0)422 44 0671

Fax: +81 (0)422 44 0671

E-mail: sara@yd5.so-net.ne.jp

Volume 3 : Issue 1

Article Ref. #: 100PRRMOJ3123

Article History

Received: February 17th, 2016

Accepted: February 22nd, 2016

Published: February 22nd, 2016

Citation

Hirukawa I, Saraya T, Wada S, Takizawa H. Marked Enlargement of Liver over a Short Period of Time. *Pulm Res Respir Med Open J*. 2016; 3(1): 1. doi: [10.17140/PRRMOJ-3-123](https://doi.org/10.17140/PRRMOJ-3-123)

Marked Enlargement of Liver Over a Short Period of Time

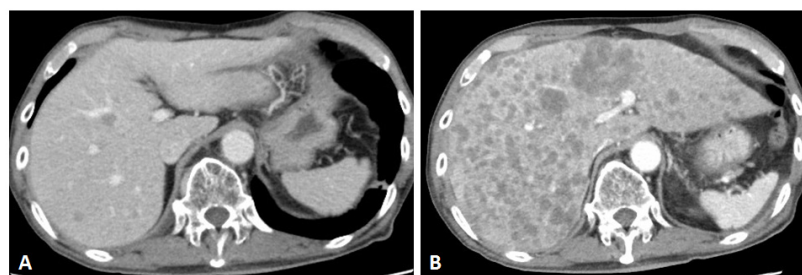
Ichiro Hirukawa, MD; Takeshi Saraya, MD, PhD^{*}; Shoko Wada, MD; Hajime Takizawa, MD, PhD

Department of Respiratory Medicine, Kyorin University School of Medicine, 6-20-2 Shinkawa, Mitaka City, Tokyo 181-8611, Japan

KEYWORDS: Tumor lysis syndrome; Small cell lung cancer; Metastatic liver tumor; Liver enlargement; Short time period.

ABSTRACT

An 81-year-old man with Small cell lung cancer (limited type), who had been treated with various intravenous chemotherapies combined with irradiation during the previous year, was admitted to our hospital (day 1) for his third intravenous chemotherapy dose. Contrast-enhanced thoraco-abdominal computed tomography on day 1 demonstrated that the primary lung cancer had not grown (data not shown); however, multiple new metastatic tumors in the liver, up to 5 mm in diameter, were seen (Figure A). Two weeks later, the liver was markedly enlarged (Figure B) and repeated Computed tomography (CT). It demonstrated rapidly progressing; various sized multiple ring-enhanced tumors along with evidence of tumor lysis syndrome. On day 23, he died of multiple organ failure. Liver metastasis is a common occurrence in lung cancer patients, but the rapid enlargement of the liver over such a short time period is an extremely rare phenomenon.¹



REFERENCE

1. Sato K, Takeyama Y, Tanaka T, Fukui Y, Gonda H, Suzuki R. Fulminant hepatic failure and hepatomegaly caused by diffuse liver metastases from small cell lung carcinoma: 2 autopsy cases. *Respir Investig*. 2013; 51(2): 98-102. doi: [10.1016/j.resinv.2012.12.004](https://doi.org/10.1016/j.resinv.2012.12.004)

Copyright

©2016 Saraya T. This is an open access article distributed under the Creative Commons Attribution 4.0 International License (CC BY 4.0), which permits unrestricted use, distribution, and reproduction in any medium, provided the original work is properly cited.